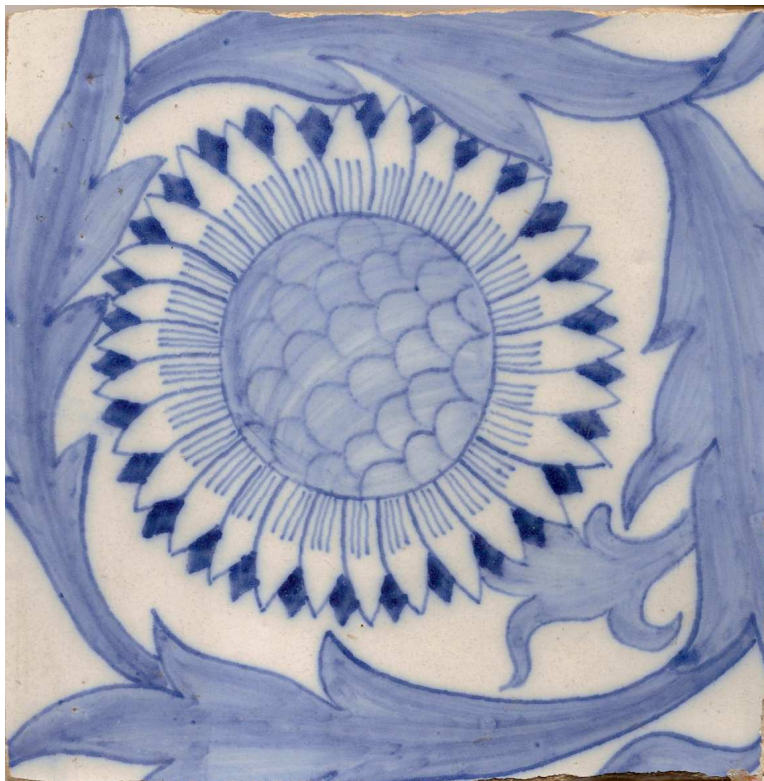


MORRIS'S *SUNFLOWER* TILE



William Morris. *Sunflower*. Blue and white tile painted by Morris & Co., circa 1870-78. 6 x 6 in. The design is attributed to both Morris and William De Morgan. Morris may have designed the four-leaf sunflower which De Morgan refined to a four-and-a-half-leaf flower. Morris decorated the interior sides of the fireplace with these tiles in his library at Kelmscott House, his workroom overlooking the Thames in Hammersmith. The tiles are visible in a photograph of the library taken by Emery Walker in 1896.